



1 Close Beg Ballawattleworth Estate, Peel, Isle of Man, IM5 1XF  
Asking Price £249,950

- Immaculately Presented Ground Floor Apartment In Popular Residential Location
- Two Generous Double Bedrooms With Wardrobe Space
- Bright Twenty Six Foot Open Plan Living Space
- Modern Kitchen With Integrated Appliances And Ample Storage
- Private Sunny West Facing Garden With Mature Hedging
- Allocated Parking Space And Active Management Company



1 Close Beg is a beautifully presented ground floor apartment located in a highly sought-after residential area. This attractive home stands out thanks to its rare and private rear garden, which is bordered by well-maintained mature hedging and shrubbery, creating a peaceful outdoor retreat.

The property is ideally positioned close to a wide range of local amenities including schools, shops, and leisure facilities such as Barbary West Coast and West Coast Fitness.

Upon entering the apartment, the front door opens into a welcoming entrance hall which benefits from two built-in storage cupboards, providing practical space for coats and household items. The hallway leads into an beautiful 26-foot open-plan lounge, kitchen and dining area. This bright and airy living space is perfect for both relaxing and entertaining, with double doors opening directly onto the private garden and allowing plenty of natural light to fill the room. The kitchen is fitted with a range of modern base and wall units complemented by contrasting work surfaces, including a built-in oven and hob.

The apartment offers two generously sized double bedrooms, each with space for integrated wardrobes. The contemporary bathroom is well appointed with a bath and shower over, wash hand basin, WC, and useful space for a storage unit.

To the rear of the property is a generous, sunny west-facing garden laid mainly to lawn on both sides of a tarmac path which leads to the communal car park. The garden also includes a useful shed.

Additional benefits include gas-fired central heating, uPVC double glazing, and a leasehold tenure with an active management company.









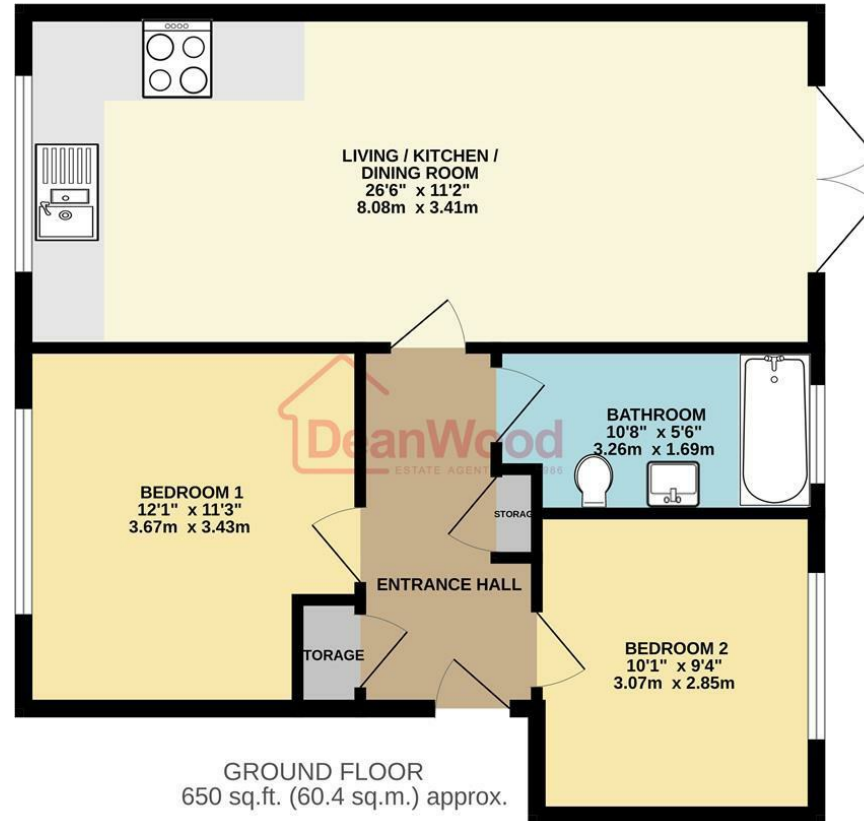




1 Close Beg Ballawattleworth Estate, Peel, Isle of Man, IM5 1XF

---





GROUND FLOOR  
650 sq.ft. (60.4 sq.m.) approx.

TOTAL FLOOR AREA: 650 sq.ft. (60.4 sq.m.) approx.  
Not to scale for identification purposes only  
Made with Metropix ©2025

**DOUGLAS**

37 VICTORIA STREET  
DOUGLAS  
ISLE OF MAN IM1 2LF

**T** 01624 620606

**F** 01624 677363

**E** info@deanwood.co.im

**CASTLETOWN**

COMPTON HOUSE  
9 CASTLE STREET CASTLETOWN  
ISLE OF MAN IM9 1LF

**T** 01624 825995

**F** 01624 825996

**E** castletown@deanwood.co.im

**RAMSEY**

LEZAYRE HOUSE  
87 PARLIAMENT STREET  
RAMSEY ISLE OF MAN IM8 1AQ

**T** 01624 816111

**F** 01624 816588

**E** ramsey@deanwood.co.im

These particulars are for information purposes only. They do not constitute or form any contract nor should any statement contained herein be relied upon as a representation of fact. Neither the vendor nor DeanWood Agencies Limited ('the firm'), nor any officer or employee of the firm accept liability or responsibility for any statement contained herein. The vendor does not by these particulars, nor does the firm, nor does any officer or any employee of the firm have any authority to make or give any representation or warranty whatsoever as regards the property or otherwise. It is the sole responsibility of any person interested in the property described in these particulars to make all proper enquiries and searches to verify the description of the property and all other particulars herein.

FOR MORE PROPERTIES VISIT OUR WEBSITE @ [deanwood.im](http://deanwood.im)